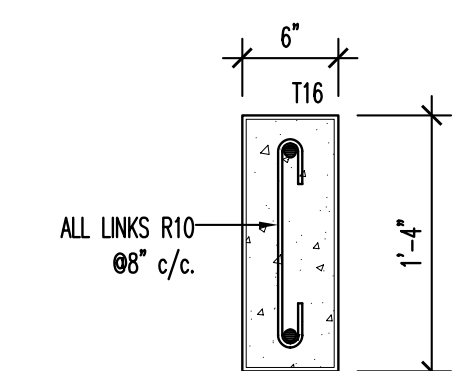


COVER TO REINFORCEMENT  
SHOULD BE 2"

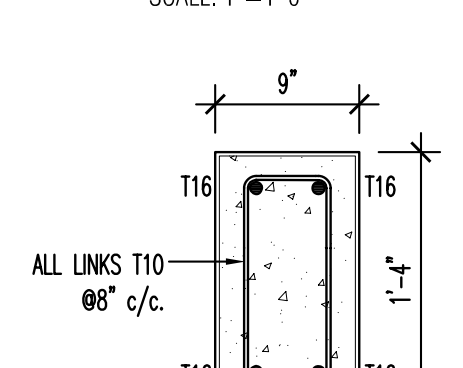
**SECTION (1-1)**

SCALE: 1" = 1'-0"



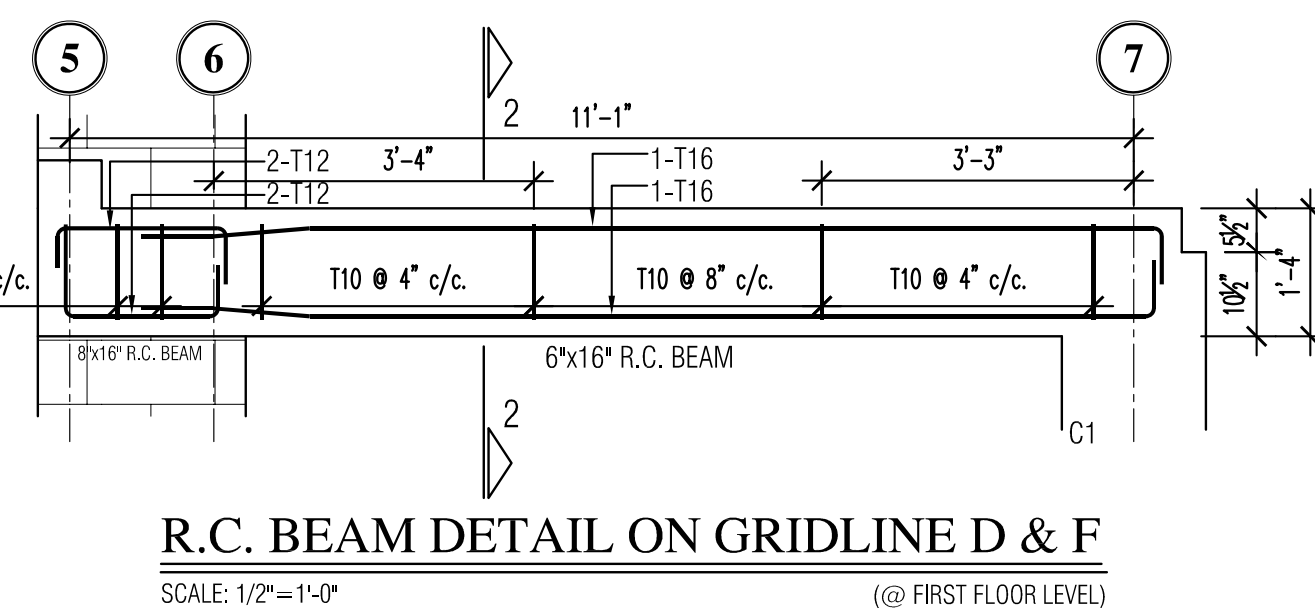
COVER TO REINFORCEMENT  
SHOULD BE 2"

**SECTION (2-2)**



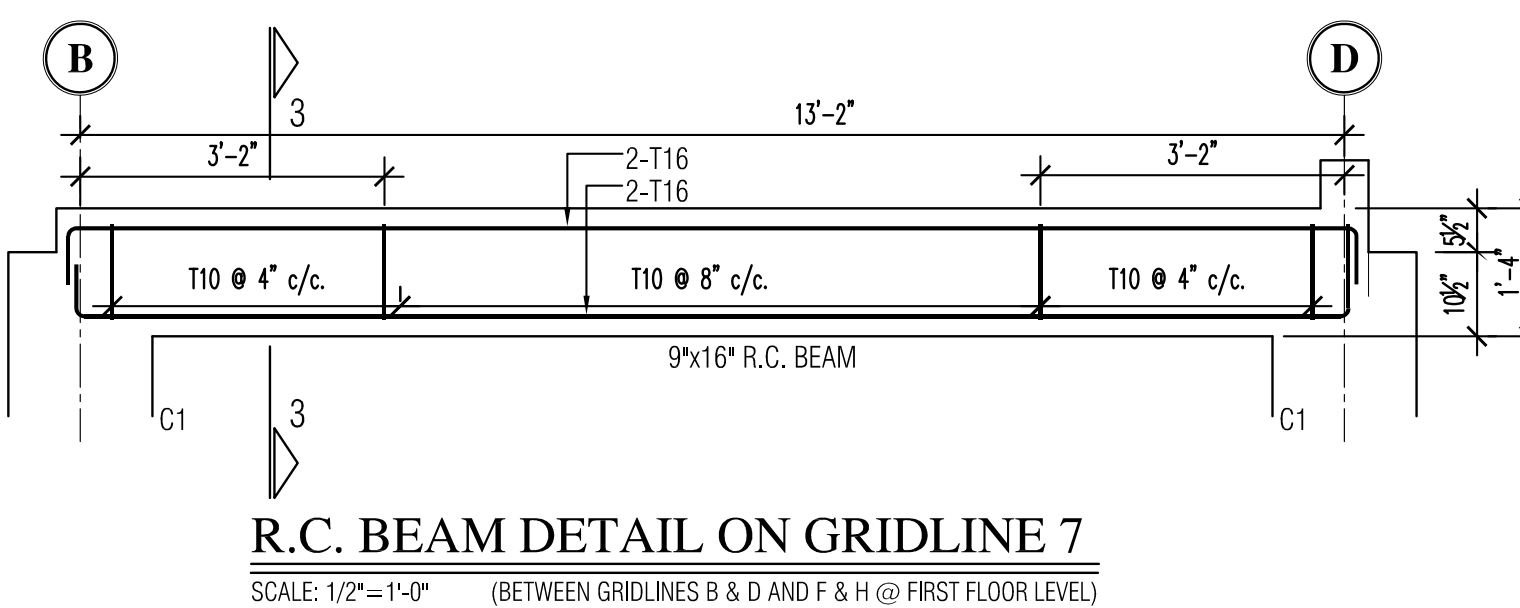
COVER TO REINFORCEMENT  
SHOULD BE 2"

**SECTION (3-3)**

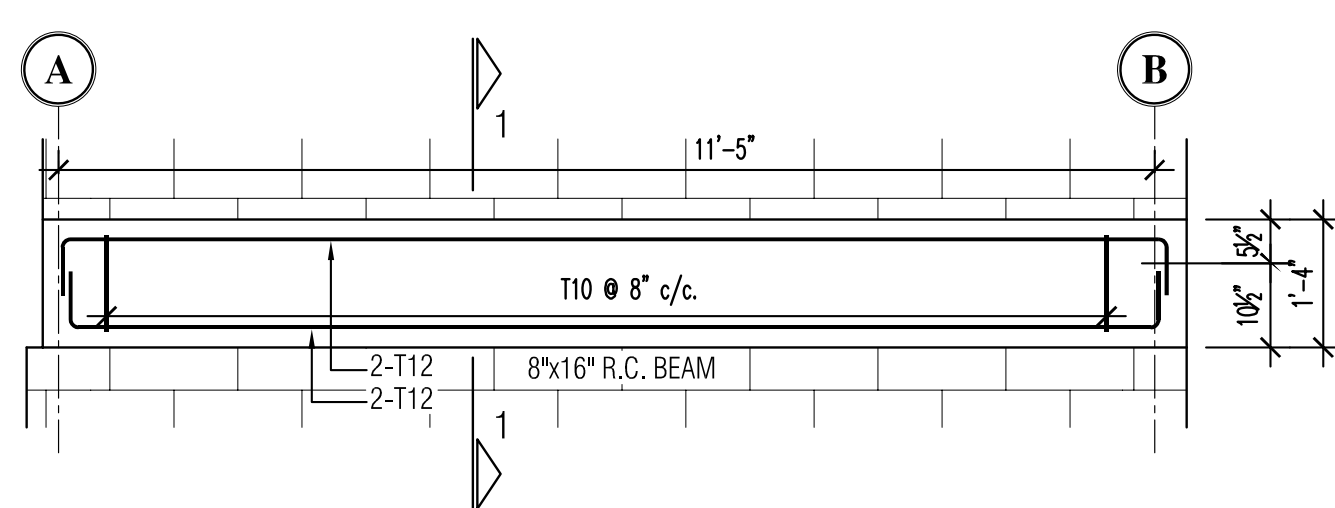


**R.C. BEAM DETAIL ON GRIDLINE B & H**  
SCALE: 1/2"=1'-0" (@ FIRST FLOOR LEVEL)

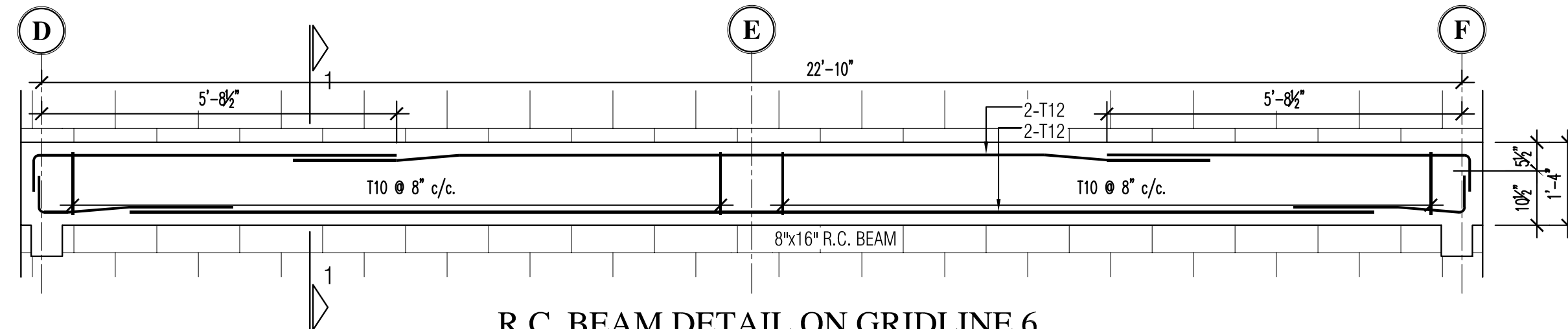
**R.C. BEAM DETAIL ON GRIDLINE D & F**  
SCALE: 1/2" = 1'-0" (@ FIRST FLOOR LEVEL)



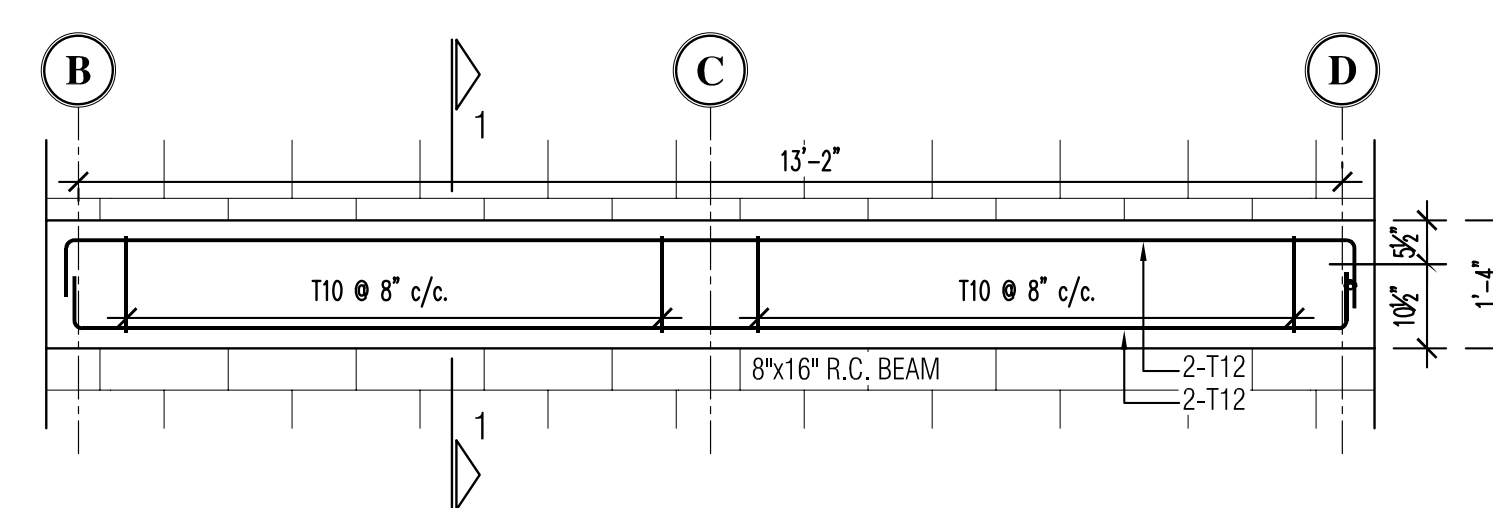
**R.C. BEAM DETAIL ON GRIDLINE 7**  
SCALE: 1/2"=1'-0" (BETWEEN GRIDLINES B & D AND F & H @ FIRST FLOOR LEVEL)



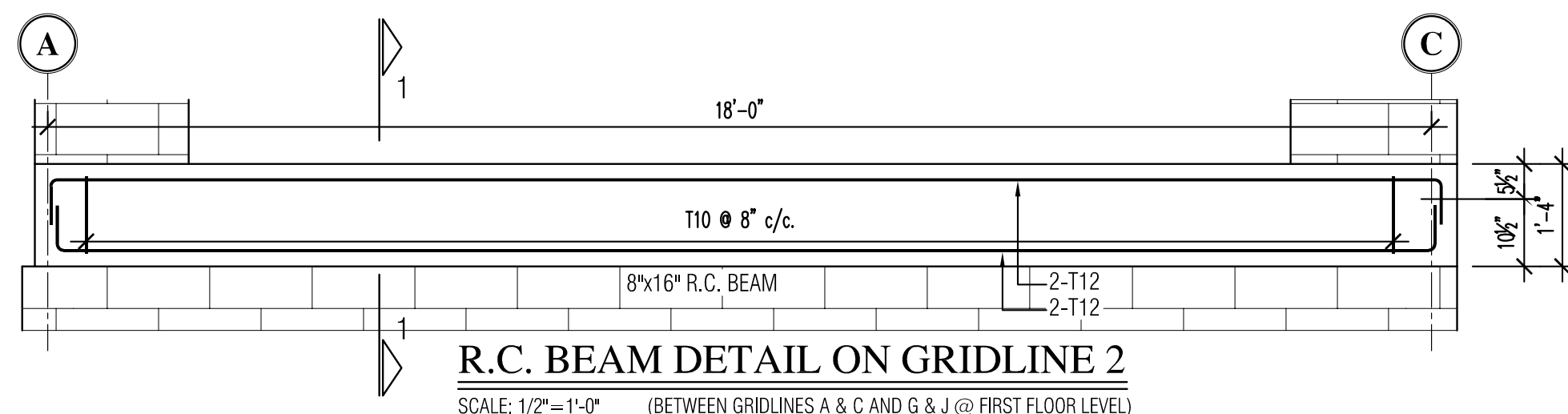
**R.C. BEAM DETAIL ON GRIDLINE 6**  
SCALE: 1/2" = 1'-0" (BETWEEN GRIDLINES A & B AND H & J @ FIRST FLOOR LEVEL)



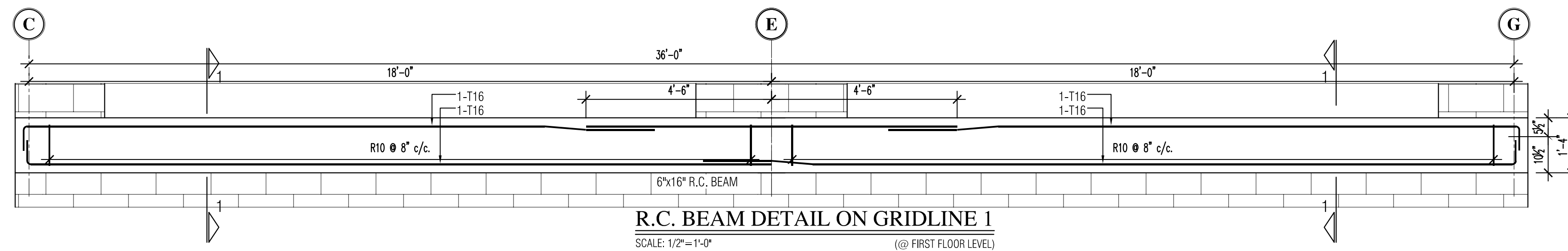
**R.C. BEAM DETAIL ON GRIDLINE 6**  
SCALE: 1/2"=1'-0" (BETWEEN GRIDLINES D & F @ FIRST FLOOR LEVEL)



**R.C. BEAM DETAIL ON GRIDLINE 5**  
SCALE: 1/2"=1'-0" (BETWEEN GRIDLINES B & D AND F & H @ FIRST FLOOR LEVEL)



**R.C. BEAM DETAIL ON GRIDLINE 2**  
SCALE: 1/2"=1'-0" (BETWEEN GRIDLINES A & C AND G & J @ FIRST FLOOR LEVEL)



R.C. BEAM DETAIL ON GRIDLINE 1

[illegible][illegible]

Project:

BEACH FRONT APARTMENTS  
**CABLE BAY RESORT**  
ST. KITTS

Drawing Title:

**BEAM ELEVATIONS  
& DETAILS**

@ FIRST FLOOR LEVEL

|          |             |               |             |  |
|----------|-------------|---------------|-------------|--|
| Designed | P. Kitson   | Eng. Check    | -           |  |
| Drawn    | J. Minguet  | Drawing Check | -           |  |
| Scale    | As Shown    | Approved      | -           |  |
| Date     | 2005.11.30  | Drawing No.:  | S07A        |  |
| Status   | Preliminary | Project No.:  | MF/085/0123 |  |
| Revision |             |               |             |  |

**BBFL PHILLIPS Ltd.**  
Consulting Engineers & Project Managers  
15 Cipriani Boulevard, Newtown, Port of Spain, Trinidad, W.I.  
Telephone: (868) 624-9872 Fax: (868) 624-0574